

Schüco ASS 70.HI

Das System Schüco ASS 70.HI bietet beste Wärmedämmung, perfekte Dichtheit und sehr gute Einbruchhemmung bei höchstem Komfort.

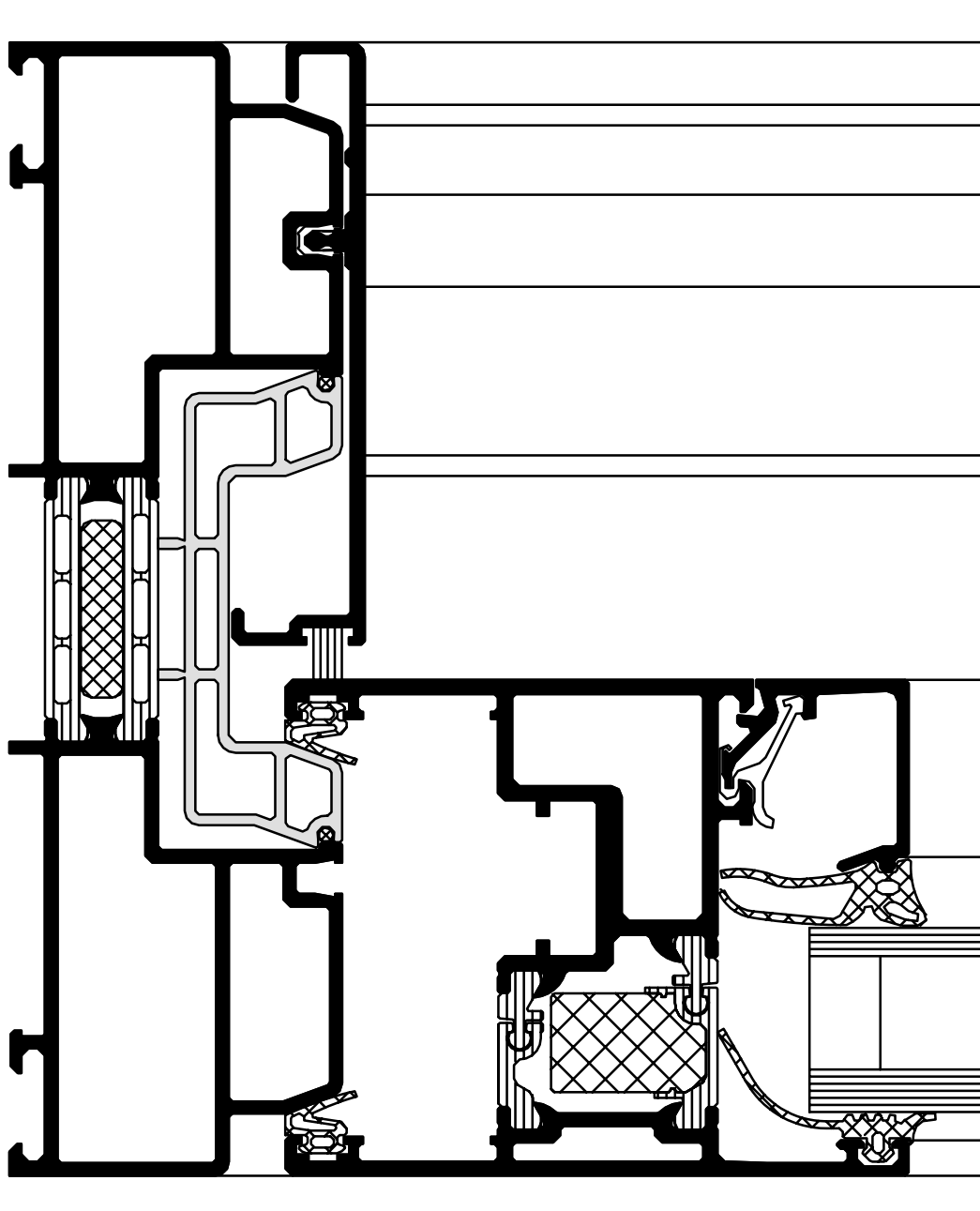
The Schüco ASS 70.HI system provides top thermal insulation, perfect weathertightness and excellent burglar resistance with maximum ease of use.



102 Eigenschaften und Vorteile
Features and benefits

104 Anwendungsmöglichkeiten
Possible applications

Schüco ASS 70.HI

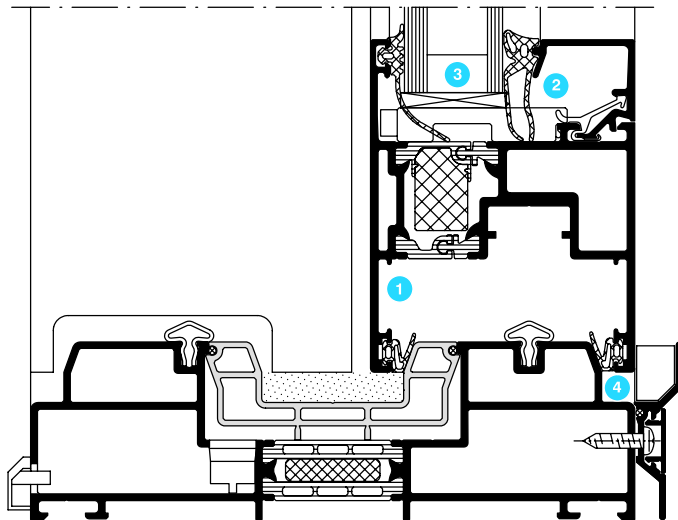


Maßstab 1:1

Scale 1:1

Eigenschaften und Vorteile

Features and benefits



Maßstab 1:2

Scale 1:2

Optik

- Hebeschiebeserie mit schmalen Profil-Ansichtsbreiten, geringer Rahmenanteil, hoher Scheibenanteil!
- ① Grundbautiefe Flügelprofil von 70 mm, Grundbautiefe Blendrahmenprofil ab 160 mm
- ② Glasdichtungen aus EPDM mit minimal sichtbaren Dichtlippen verhindern "Trauerränder"
- Flügelprofile und flächenbündige Glasleisten auch mit abgerundeter Softlinekontur
- flaches Blendrahmenprofil als umlaufender Rahmen, niedrige Schwelle für hohen Komfort
- Blend- und Flügelrahmen werden umlaufend auf Gehrung gearbeitet, harmonische Rahmenarchitektur

Funktionalität

- große Farbvielfalt möglich, auch außen andersfarbig als innen
- hohe Flexibilität im Objektgeschäft durch Profil-Eigenverbund
- ③ Glasstärken bis 52 mm einsetzbar
- Schlagregendichtheit, je nach Ausführung, bis Klasse E 750 nach DIN EN 12208
- Flügelgewichte bis 300 kg
- einbruchhemmend WK 2 gemäß DIN EN V 1627 je nach Ausführung
- große Typenvielfalt, mit zwei Laufschielen aus Edelstahl
- ④ leichter und geräuscharmer Lauf der Schiebeelemente
- Wärmedämmung nach DIN EN ISO 10077, Teil 1 $U_D < 1,5$ (W/m²K)

Design

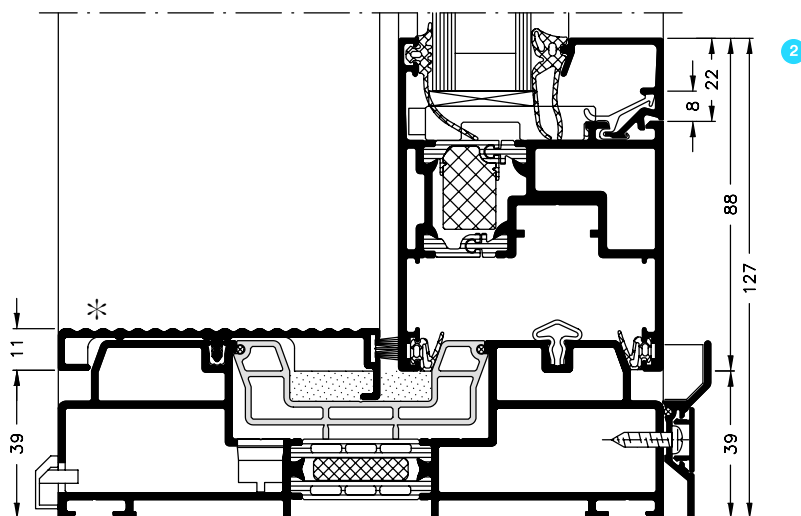
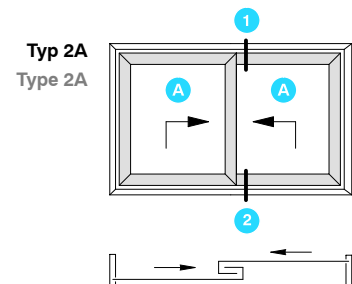
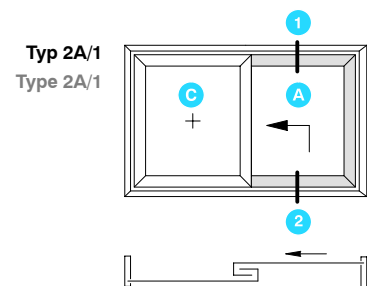
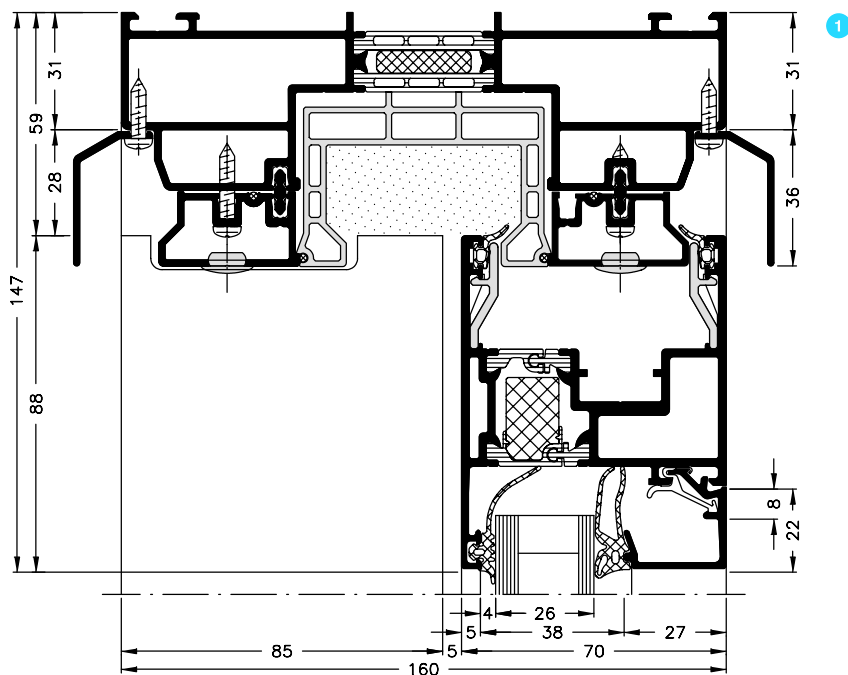
- Lift-and-slide series with narrow profile face widths, proportionally narrow frames to large panes
- ① Basic depth of vent profile 70 mm, basic depth of outer frame profile 160 mm
- ② EPDM glazing gaskets with discreet gasket lips prevent black borders
- Vent profiles and flush-fitted glazing beads also with rounded softline contour
- Flat outer frame profile as continuous frame, low threshold for easy access
- Outer and vent frames are mitred all round, to give an elegant appearance

Functions

- Wide choice of colours, different colours inside and outside
- High degree of flexibility with large-scale projects for customers to roll own profiles together
- ③ Glass thicknesses up to 52 mm possible
- Weathertightness up to class E 750 in accordance with DIN EN 12208, dependent on design
- Vent weights up to 300 kg
- Burglar resistance class WK 2 in accordance with DIN EN V 1627, dependent on design
- A wide range of designs, with stainless steel double tracks
- ④ Units slide smoothly and quietly
- Thermal insulation in accordance with DIN EN ISO 10077, Part 1 $U_D < 1.5$ (W/m²K)

Anwendungsmöglichkeiten Possible applications

Ausführung max. Flügelgewicht: 150 kg
Max. vent weight: 150 kg

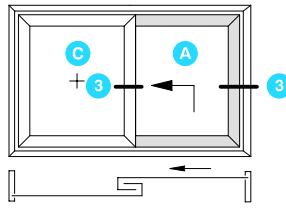


* Trittprofil nur bei 1 beweglichen Flügel Typ 2A/1
Tread plate profile for 1 movable vent only, type 2A/1

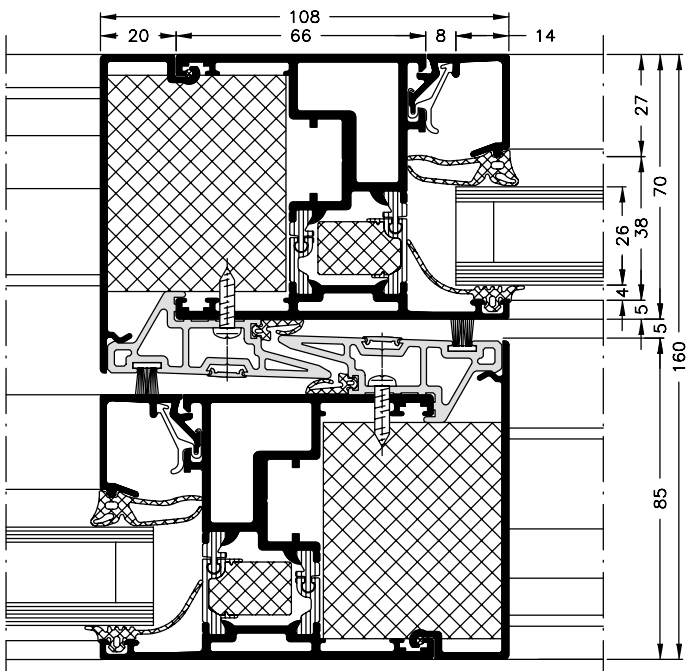
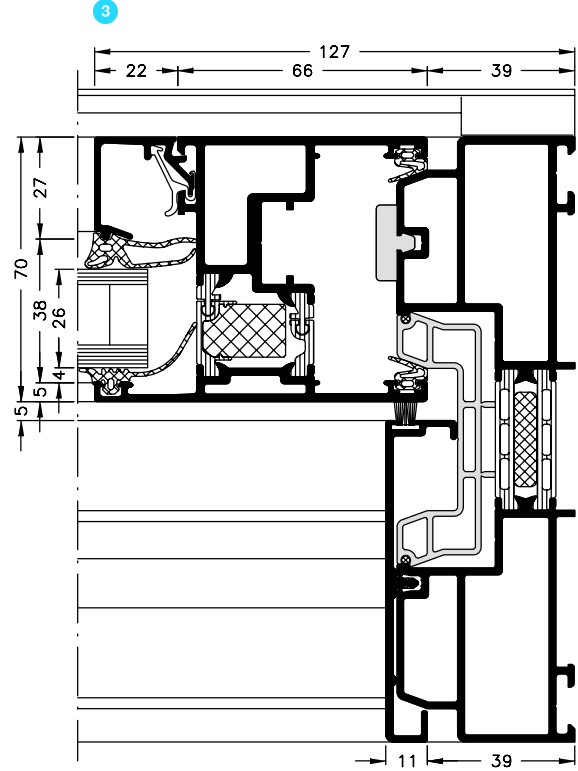
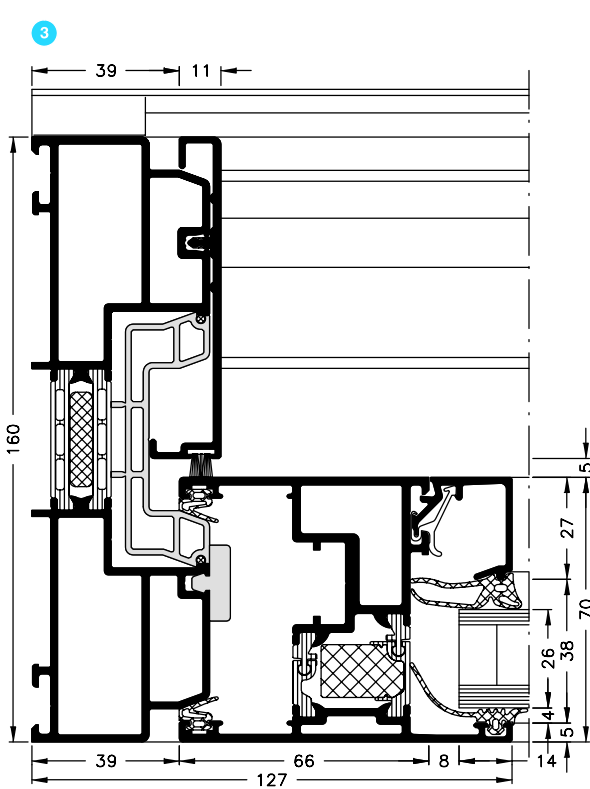
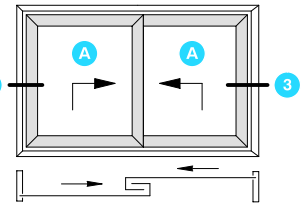
Maßstab 1:2
Scale 1:2

- A** HS-Flügel
LS vent
- C** Festflügel
Fixed vent

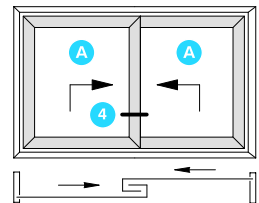
Typ 2A/1
Type 2A/1



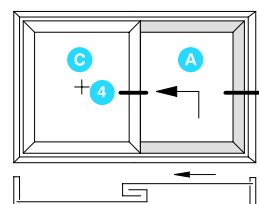
Typ 2A
Type 2A



Typ 2A
Type 2A

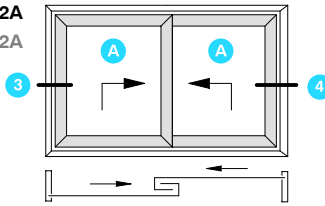


Typ 2A/1
Type 2A/1

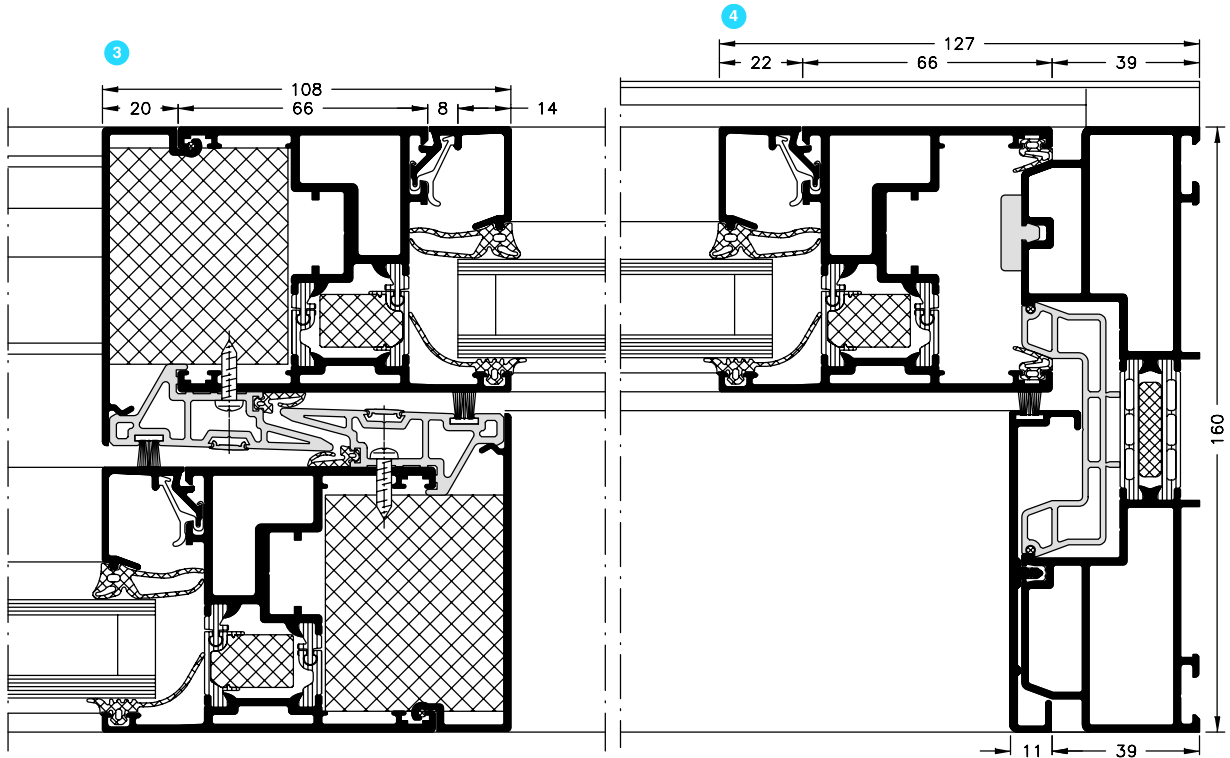
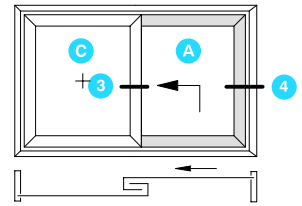


Ausführung max. Flügel-
gewicht: 150 kg
Max. vent weight: 150 kg

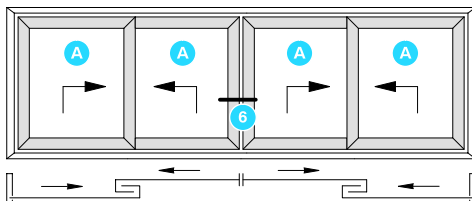
Typ 2A
Type 2A



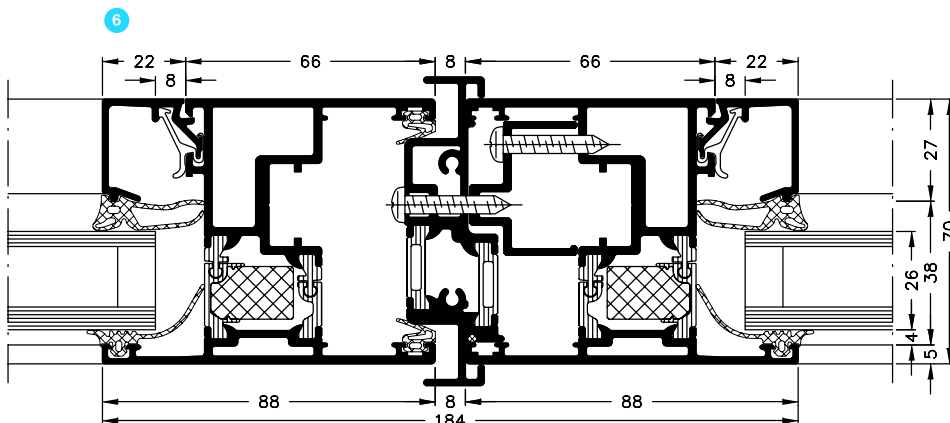
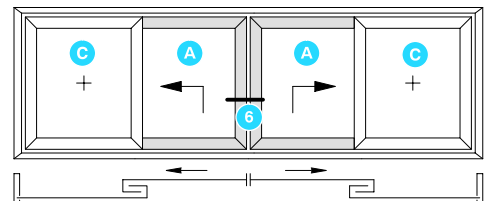
Typ 2A/1
Type 2A/1



Typ 2D
Type 2D

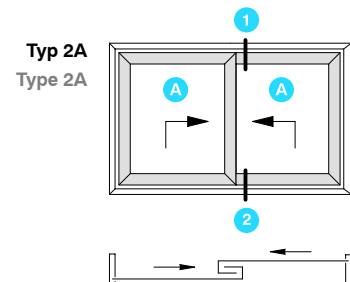
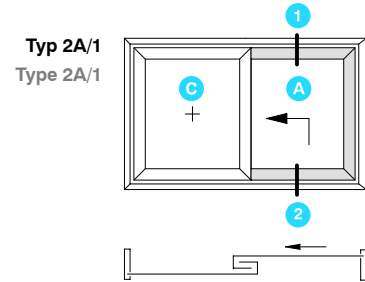
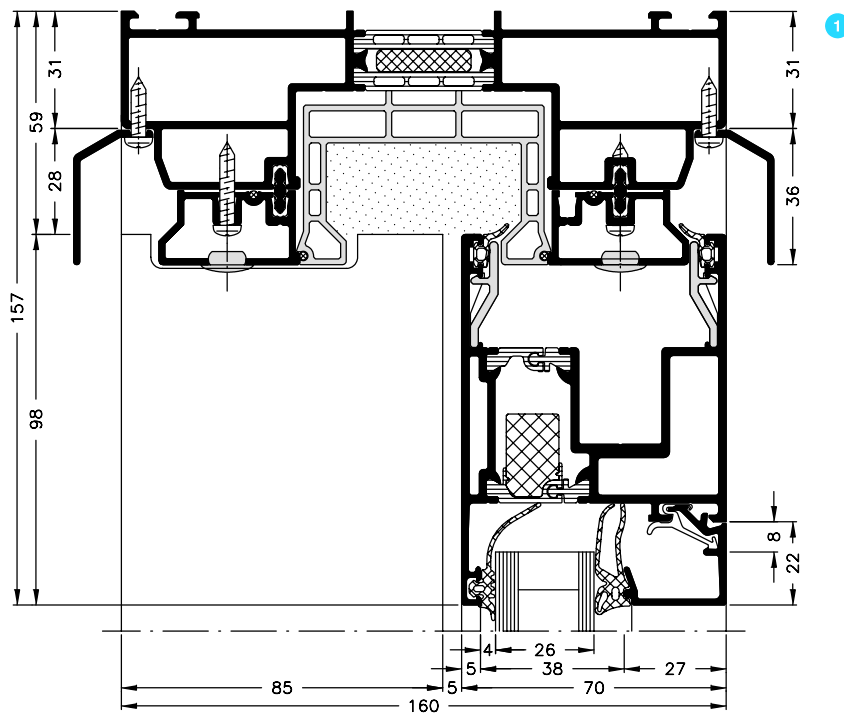


Typ 2D/1
Type 2D/1

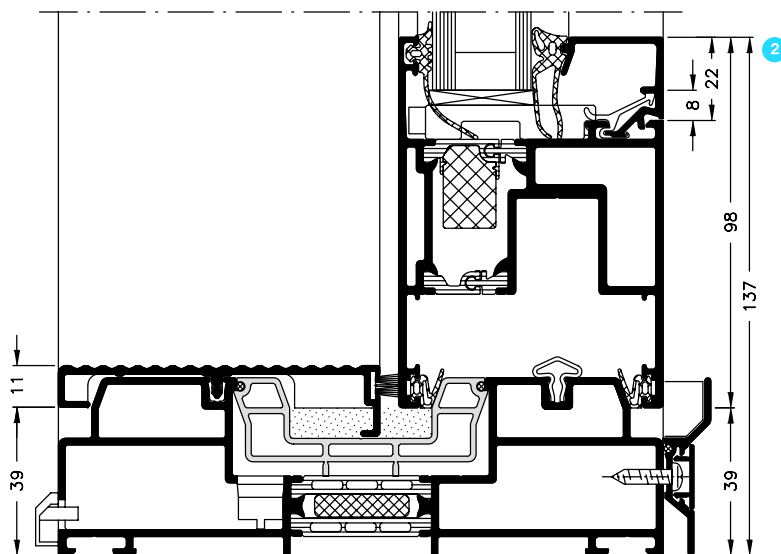


Maßstab 1:2
Scale 1:2

Ausführung max. Flügelgewicht: 300 kg
 Max. vent weight: 300 kg

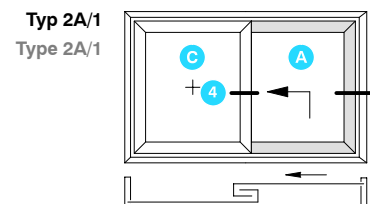
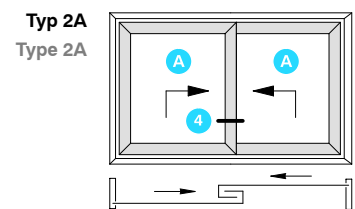
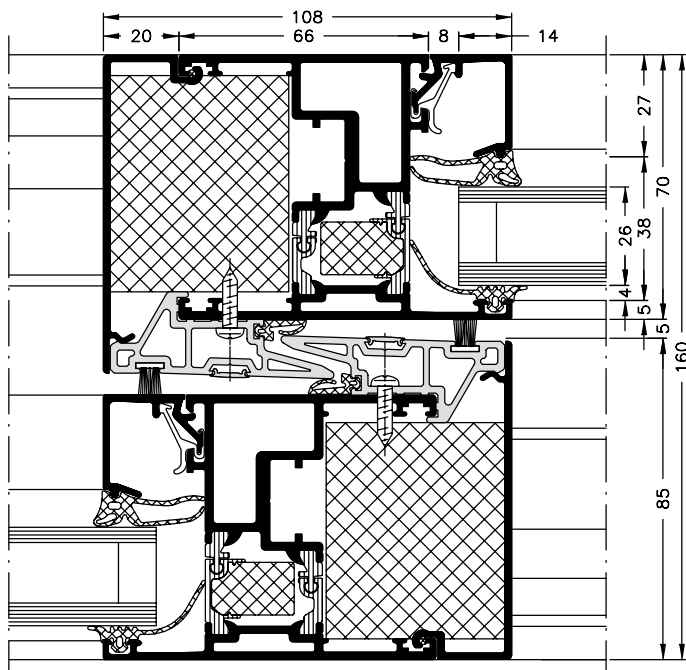
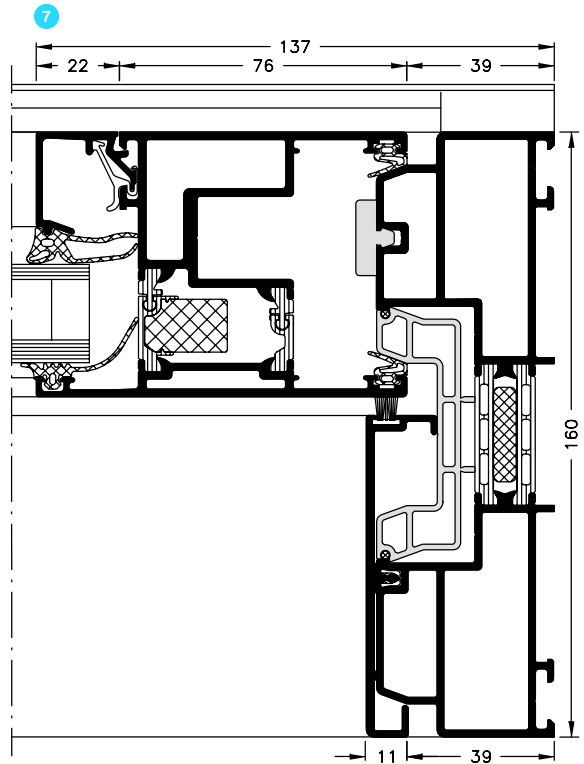
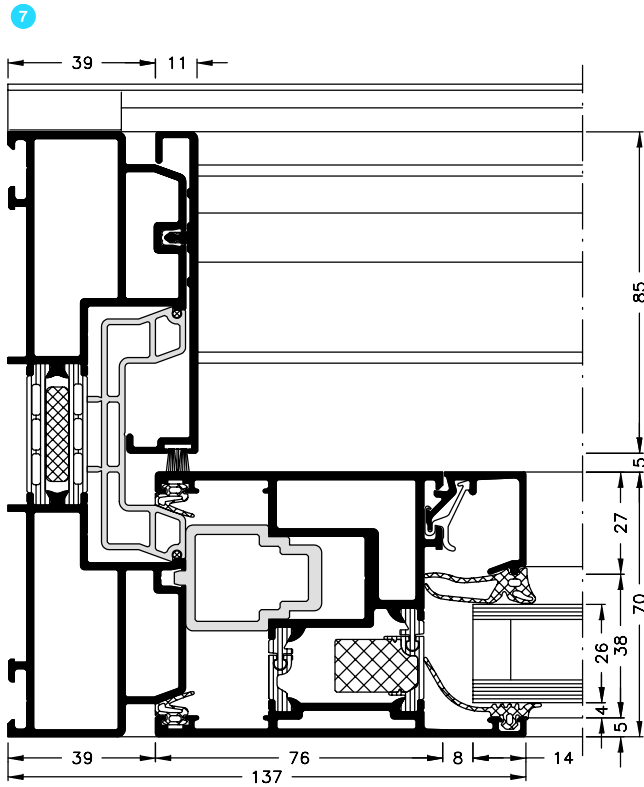
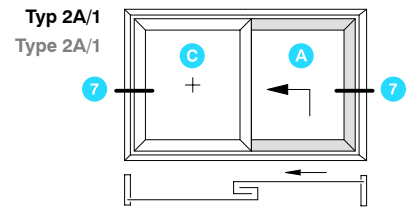


- A** HS-Flügel
 LS vent
- C** Festflügel
 Fixed vent



Maßstab 1:2
 Scale 1:2

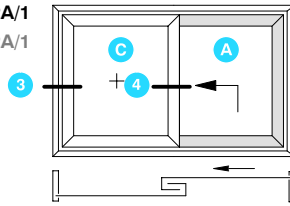
Ausführung max. Flügelgewicht: 300 kg
 Max. vent weight: 300 kg



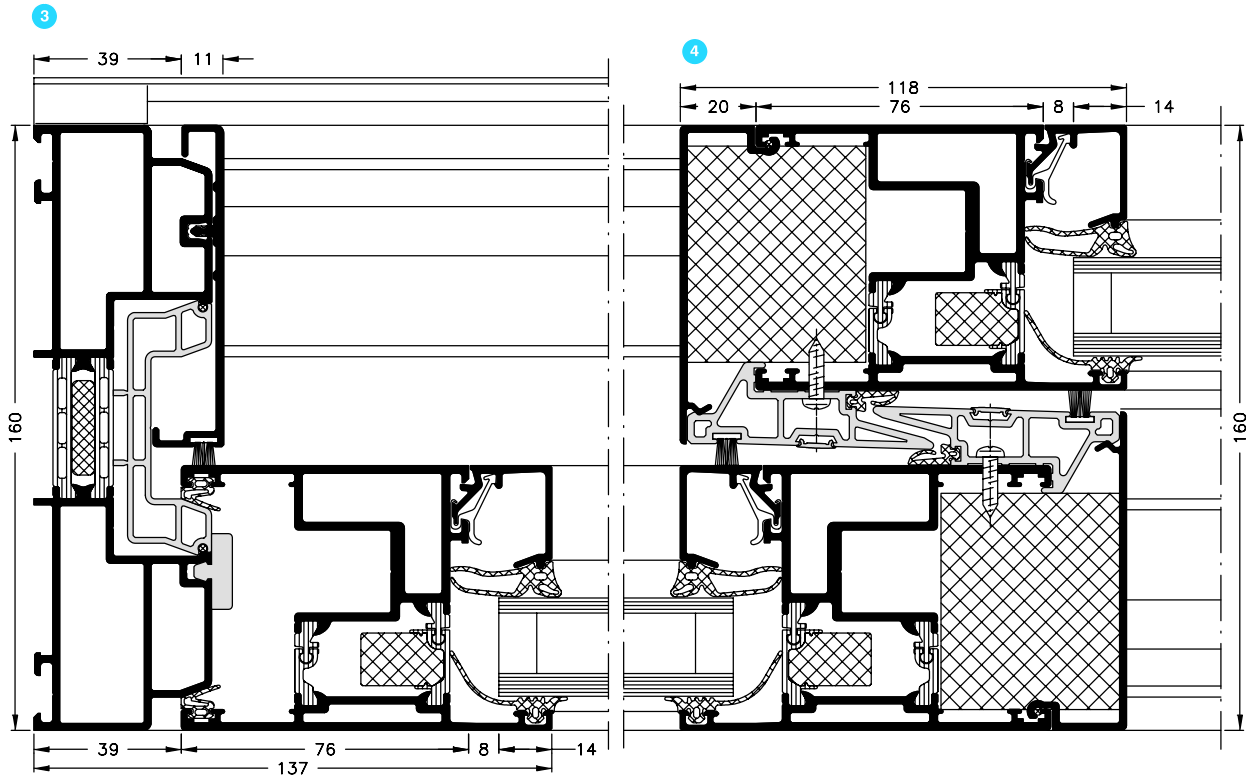
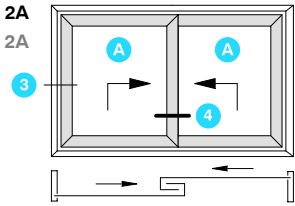
Maßstab 1:2
 Scale 1:2

- A** HS-Flügel
LS vent
- C** Festflügel
Fixed vent

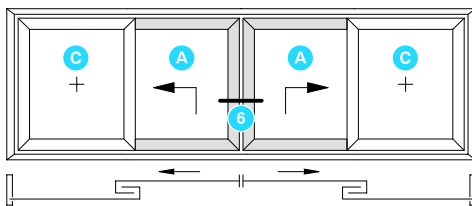
Typ 2A/1
Type 2A/1



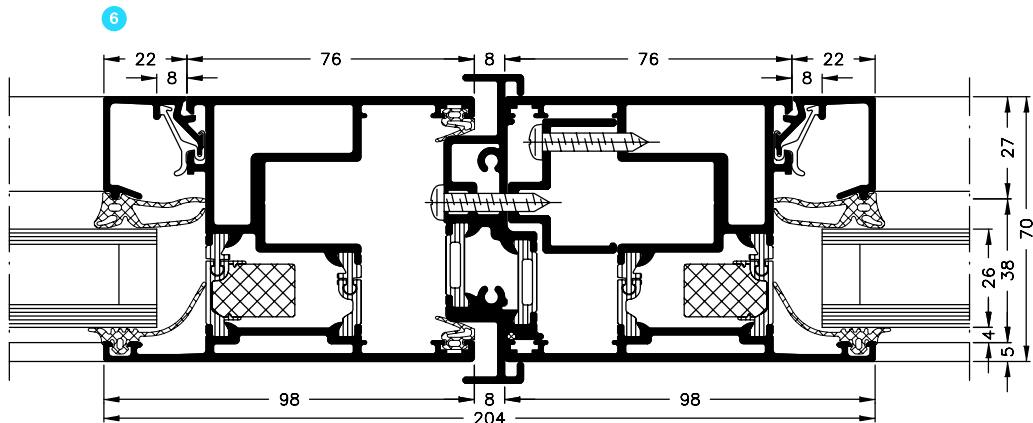
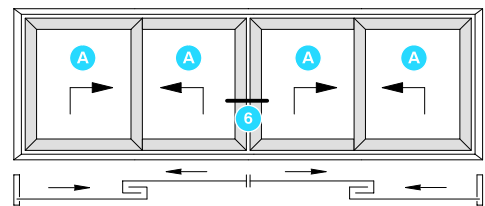
Typ 2A
Type 2A



Typ 2D/1
Type 2D/1



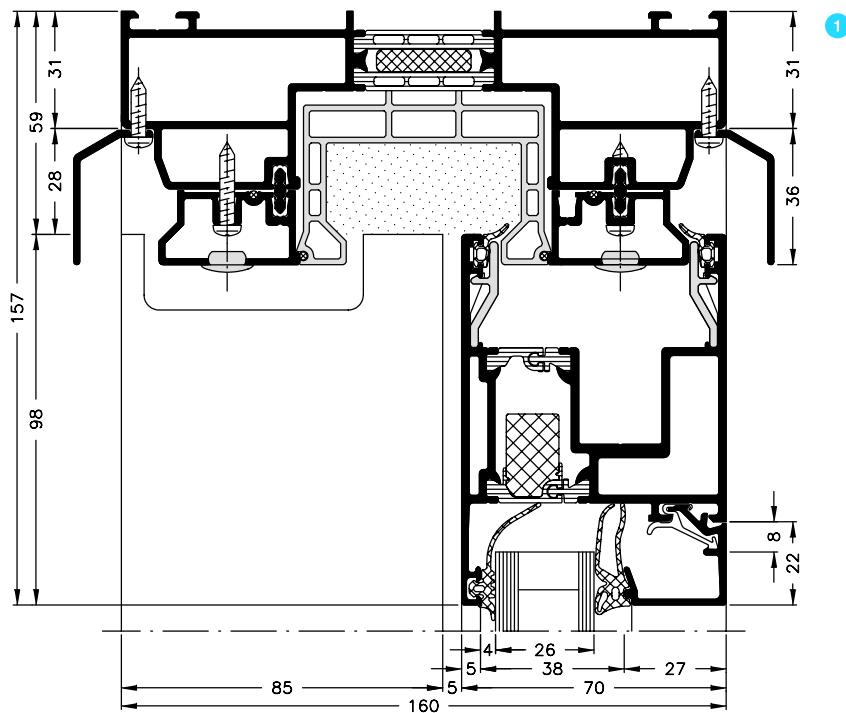
Typ 2D
Type 2D



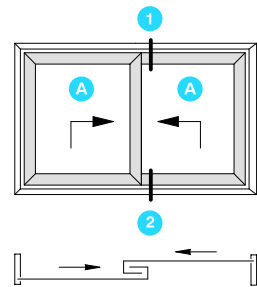
Maßstab 1:2
Scale 1:2

Ausführung max. Flügelgewicht: 300 kg

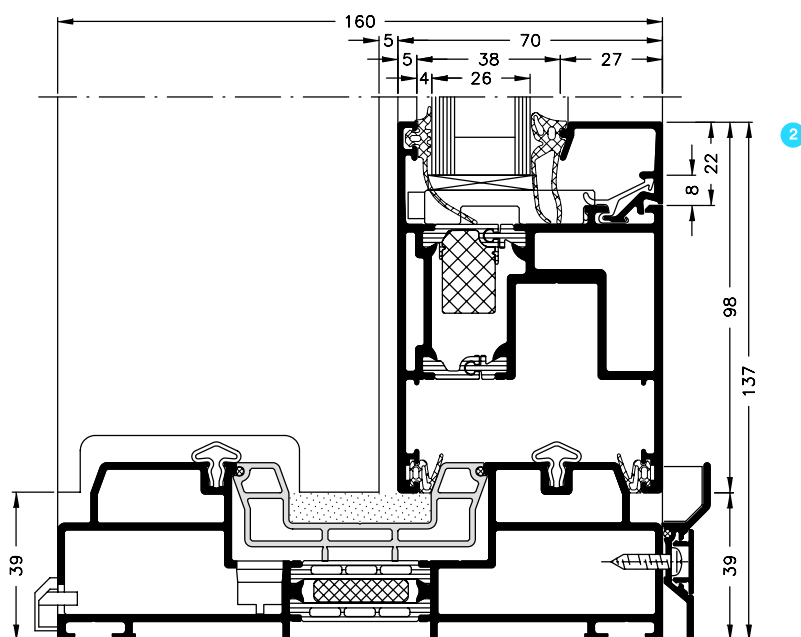
Max. vent weight: 300 kg



Typ 2A
Type 2A



A S-/HS-Flügel
S / LS vent



Maßstab 1:2

Scale 1:2